

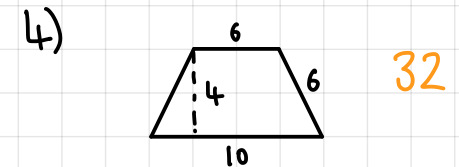
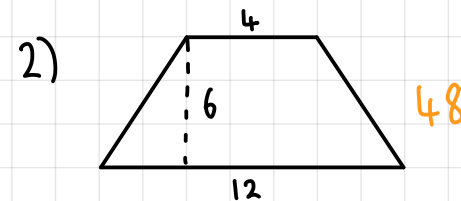
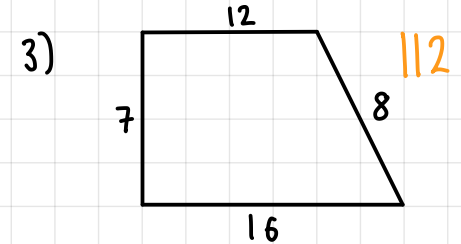
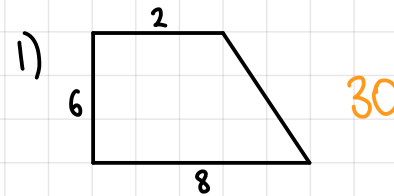
STEP 13: AREA OF TRIANGLES

A triangle has an area of 48cm^2 .
Draw as many triangles that give this

STEP 14: AREA OF A TRAPEZIUM

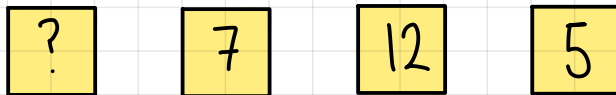
$$A = \frac{(a+b) \times h}{2}$$

Calculate the area of the following:



STEP 15: SOLVE PROBLEMS WITH THE MEAN

The mean of these numbers is 8, what is the ?



$$24 + ? = 32 \quad ? = 8$$

If we added another card with a value of 12, what would happen to the mean?

go up, as it is greater than the current mean.

STEP 16: MULTIPLICATION & DIVISION WITH ALGEBRA

Using $x = 4$ and $y = 9$

1) $3x = 12$

6) $\frac{3x}{2} = 6$

2) $2y = 18$

7) $\frac{2y}{6} = 3$

3) $3x + 2y = 30$

8) $3x^2 = 48$

4) $\frac{x}{2} = 2$

5) $\frac{y}{3} = 3$

9) $3x^2 + 2y = 66$