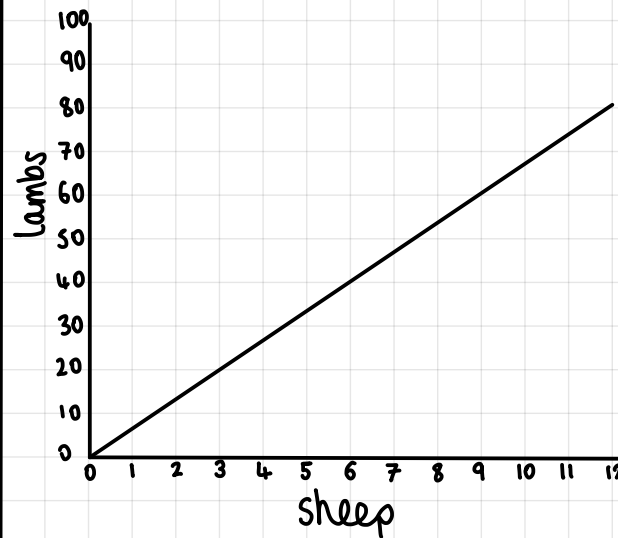


## STEP 1: SOLVE PROBLEMS (DIRECT PROPORTION)

Complete the table (assume they are directly proportional!)

Chickens	Eggs
1	6
	18
5	
$x$	

## STEP 2: CONVERSION GRAPHS



3 sheep  $\approx$  60 lambs

60 sheep  $\approx$  60 lambs

10 sheep  $\approx$  100 lambs

## STEP 3: CONVERT CURRENCIES

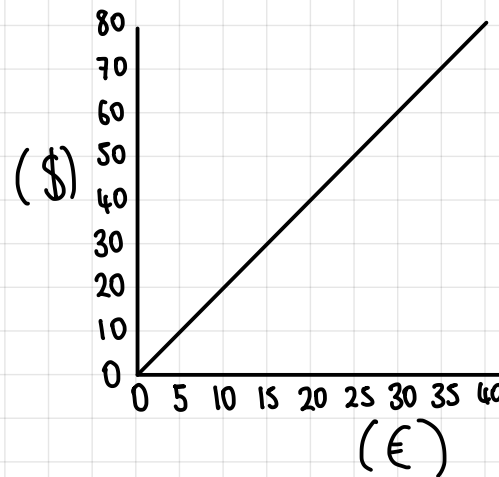
$$\$1 = \pounds 0.75$$

a) What is more \$10 or £10?

b) What is £50 in \$?

c) What is \$125 in £?

## STEP 4: DIRECT PROPORTION GRAPHS



\$50 =

= €35

\$1 =

= €1