

### STEP 13: AREA OF TRIANGLES

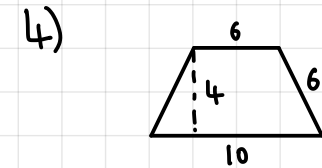
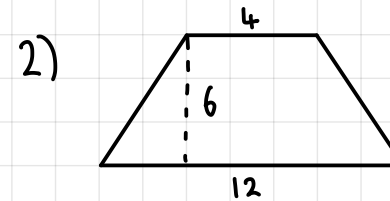
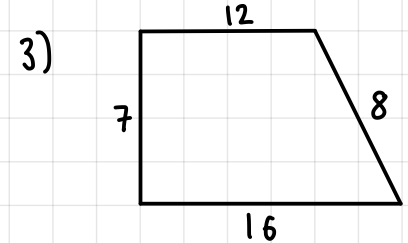
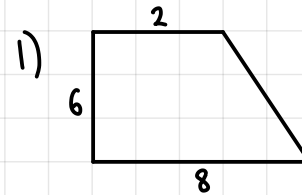
A triangle has an area of  $48\text{cm}^2$ .  
Draw as many triangles that give this

→

### STEP 14: AREA OF A TRAPEZIUM

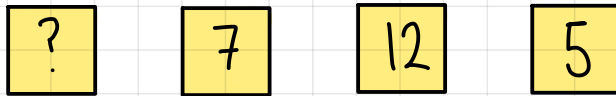
$$A = \frac{(a+b) \times h}{2}$$

Calculate the area of the following:



### STEP 15: SOLVE PROBLEMS WITH THE MEAN

The mean of these numbers is 8, what is the ?



If we added another card with a value of 12, what would happen to the mean?

### STEP 16: MULTIPLICATION & DIVISION WITH ALGEBRA

Using  $x = 4$  and  $y = 9$

1)  $3x =$

6)  $\frac{3x}{2} =$

2)  $2y =$

7)  $\frac{2y}{6} =$

3)  $3x + 2y =$

8)  $3x^2 =$

4)  $\frac{x}{2} =$

5)  $\frac{y}{3} =$

9)  $3x^2 + 2y =$